



RED PANDA
NETWORK



ANNUAL REPORT

2022



BOARD MEMBERS

Nicki Boyd

Pascal Damois

Angela Glatston

Jim Hakness

Christer Larsson

Kristin Leus

Nick Lindsay

Joy Marsalla

Rafa Salvador

Norman Schwab

Brian Williams

STAFF

NEPAL PERSONNEL

Shiva Kumar Basnet

Office Assistant

Wangchu Bhutia

Program Officer

Dinesh Ghale

Program Officer

Khagendra Karki

Admin and Finance Officer

Sonam Tashi Lama

Conservation Program Manager

Sony Lama

Program Associate

Haris Rai

Program Development Manager

Ang Phuri Sherpa

Executive Director

Pema Sherpa

Monitoring Officer

Janam Shrestha

Program Associate

Saroj Shrestha

Program Coordinator

Munmun Tamang

Program Associate

US PERSONNEL

Terrance Fleming

Deputy Director

Mark Hougardy

Development Coordinator

VOLUNTEERS

Christina Barba

Writing and Communications

Dev Bhandari

Blog Writing, Student Volunteer

Anita Dahal

Transcribing and Translation

Jules David Joanna Belyea

Content Writer

Bryan Filarsky

Graphic Design

Laura Finnegan

Graphic Design

Minami Furukawa

Social Media Guru

Arati Gurung

Translation and Transcribing

Sarah Hibbs

Administrator, Zoo Relations

David Huang

Finance

Kuniko Kai

Outreach, Zoo Relations

Samasta B. Khadka

Translation and Transcribing

Esther Kwak

Grant Writing Intern

Holly MacCormick

Writing and Communications

Darby Minter

Graphic Design

Dawn Peterson

Writing and Communications

Nikeet Pradhan

Transcribing and Translation

Jon Rossi

Writing and Communications,
Zoo Relations

Rojan Sapkota

Transcribing

Brian Sim

Outreach, Business
Partnerships, Media Relations,
Writing and Communications

Chris Turner-Neal

Writing and Communications

Sarah Timilsina

Blog Writing, Student Volunteer

Lily Wang

Graphic Design

Danica Wolfe

Writing and Communications,
Zoo Relations





CONTENTS

04	MESSAGE FROM EXECUTIVE DIRECTOR
06	ABOUT RED PANDA NETWORK
08	RESEARCH AND MONITORING
11	EDUCATION AND OUTREACH
25	HABITAT MANAGEMENT
33	SUSTAINABLE LIVELIHOOD
41	GOVERNANCE
58	2022 SUPPORTERS
62	FINANCIAL SUMMARY





This year Red Panda Network turns 15! During fifteen years of red panda conservation, we have reached critical milestones while overcoming challenges to save the red panda – the first panda!

Dear friends,

This year Red Panda Network turns 15! During fifteen years of red panda conservation, we have reached critical milestones while overcoming challenges to save the red panda – the first panda!

Thank you to everyone who made this progress possible, including our team and partners in the field and incredible donors and conservation partners worldwide.

This annual report highlights our conservation impacts over the last 12 months. However, some outcomes featured are from decades of learning, hard work, and persistence.

Unfortunately, poaching and habitat loss (and forest degradation) threaten the future of this endangered species. As a result, community-based programs, like our flagship habitat restoration initiative, have become more critical and urgent than ever.

Thanks to our generous supporters, the Plant A Red Panda Home campaign, launched in 2020 in

response to alarming habitat loss and fragmentation, we worked with local communities in planting 88,860 native tree seedlings, restoring approximately 90 hectares of red panda habitat, and constructing 18 water conservation ponds.

We have also reached over 100,000 local individuals with red panda conservation outreach, conducted an array of anti-poaching workshops and patrols, and enhanced the capacity of security officials. Thanks to you, we're combating the illegal red panda trade, which threatens red panda populations already vulnerable due to deforestation, through our No Panda Poaching campaign.

We're committed to transparent and equitable sharing of benefits among local stakeholders while ensuring the sustainability of red panda conservation. Developing the Nepal Red Panda Governance Standard has been essential to this approach, providing context-specific methodologies to monitor and evaluate the quality of governance systems practiced in red panda range areas in Nepal.

This year, we began implementing a community-based red panda conservation program in three new districts of eastern Nepal: Solukhumbu, Khotang, and Bhojpur. With this expansion, we're now working in over 50% of red panda range districts in Nepal and will focus on upscaling our conservation efforts this year.

As we celebrate our conservation accomplishments, there is still much to be done to secure a sustainable future for red pandas and the people who protect them. We are thankful for your unwavering support and so grateful to have you on this journey to save the last of the first panda.

Many thanks,

ANG PHURI SHERPA
Executive Director

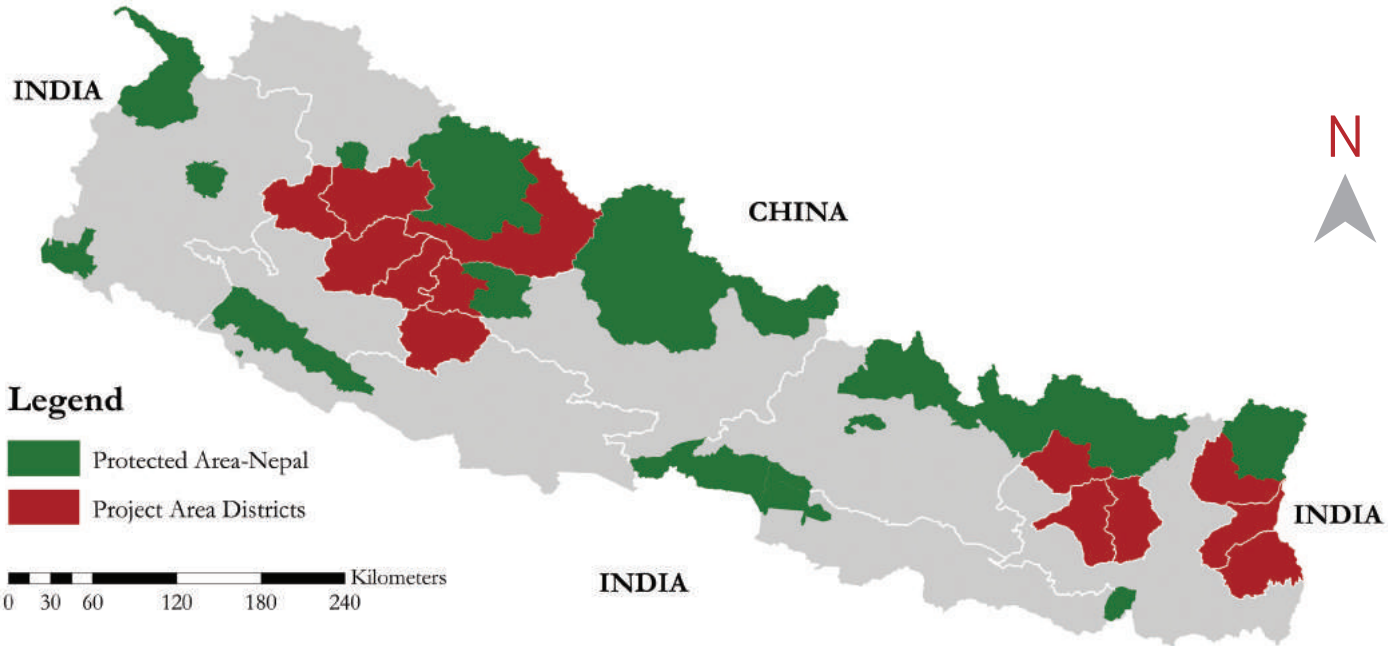
A low-angle photograph of a misty forest. The foreground is filled with green bamboo leaves and branches. In the background, numerous tall, thin tree trunks rise vertically, their tops shrouded in a thick, white mist. The lighting is soft and diffused, creating a serene and ethereal atmosphere.

ABOUT RED PANDA NETWORK

Red Panda Network (RPN) envisions a secure, viable and thriving population of wild red pandas through our holistic approach of community-based conservation.

RPN's expertise includes scientific research and in-situ conservation, and impact ranges from grassroots to policy levels. Thanks to all who have supported our mission for over 15 years, we continue to deliver an outstanding track record of community-based red panda conservation.

WORKING DISTRICTS



NEW HOPE, NEW DISTRICTS

The 2016 National Red Panda Survey documented the presence of red pandas with 158 sq. km of potential habitat in the Solukhumbu, Khotang, and Bhojpur districts of eastern Nepal. This year, RPN expanded a community-based red panda conservation program to these three

districts! This strategic extension will help establish connectivity – and a biological corridor – between Makalu Barun National Park and Kangchenjunga Conservation Area in the east, Sagarmatha National Park in the north, and Gaurishankar Conservation Area in the west. These

programs will address and respond to human-induced threats to red pandas (and other sympatric species) through habitat monitoring, forest protection, habitat restoration, livelihood improvement, and conservation outreach.

RED PANDA NETWORK'S SONAM LAMA WON WHITLEY AWARD

“Future generations should have the right to see this charismatic species. I would love my daughter to know about red pandas, wouldn't you?”

- Sonam Tashi Lama

RPN's Sonam Tashi Lama has been awarded with a world-leading prize for wildlife conservation, the 2022 Whitley Award for the project “People and Red Pandas: Mutually Beneficial Conservation in the Himalayas.”.

This project came out of the threat of habitat loss and a pandemic-fueled rise in red panda poaching in Nepal. The Covid-19 pandemic stifled livelihood opportunities in the rural communities of Nepal, exacerbating poverty and causing illegal activities such as red panda poaching to reach an unprecedented level in 2021.

Nepal's annual deforestation rates are highly concerning as unprotected forests are cut down to be converted for agriculture and settlement. Red panda habitat has been fragmented into more than 400 small forest patches, that may possibly cause inbreeding depression among red panda population.

The Whitley Award will help to transform red panda poachers into protectors and provide sustainable income for communities, especially socially and economically at-risk women and youth. The award was of £40,000 from the Whitley Fund and the award was presented by HRH the Princess Royal.





RESEARCH & MONITORING

95 

Community Forests Adopted
Community-based Red Panda
Monitoring Program

304 

Kilometers Patrolled within
Red Panda Habitat for Anti-
poaching Monitoring



STUDY OF PROTECTED AREA AND TERRESTRIAL BIODIVERSITY IN UPPER ARUN

RPN completed a field survey at the Upper Arun Hydropower Project site to see how red panda (*Ailurus fulgens fulgens*) and other local species – Himalayan black bear (*Ursus thibetanus*), Chinese pangolin (*Manis pentadactyla*), musk deer (*Moschus leucogaster*), and Mandell's mouse-eared myotis (*Myotis sicarius*) – are affected by the planned construction of the hydropower.

The study also analyzed the management capacity and financial health of the national park and buffer zone area and their effectiveness in achieving conservation objectives. The results provided insight for the World Bank on if the Upper Arun Hydropower Project complies with the Environmental and Social Framework standards for biodiversity.



FOREST GUARDIANS: RED PANDA PROTECTORS

58



Forest Guardians trained in red panda population & habitat monitoring

95



Community Forests included in red panda monitoring program

6



New Monitoring Blocks established in red panda habitat



Forest Guardians (FGs) are more than just red panda protectors – they are the heart of red panda conservation. FGs are community members who patrol local forests and collect data on red panda populations and changes in the habitat. The goal is to utilize citizen science methods to engage and empower communities to safeguard their forests and protect red pandas. RPN has more than 100 FGs monitoring in 82 permanent monitoring blocks throughout Nepal.

100 FGs monitored

82

permanent monitoring blocks throughout Nepal



RED PANDA PRESENCE-ABSENCE SURVEY IN EASTERN NEPAL

A presence-absence wildlife survey is crucial to devising an effective species conservation management strategy. The survey provides baseline data for classifying potential habitats and understanding population distribution trends, habitat status, and threats to the red panda.

6



New Community Forests surveyed for red panda presence-absence



NO PANDA POACHING!

Wildlife crime is causing a precarious situation for red pandas in Nepal. One of the most pressing threats to red panda survival is illegal poaching and trade – and it's getting worse. The number of red panda pelts confiscated by authorities is fluid and changes from year to year. Misinformation on the value of red panda pelts and demand for this endangered species in the trade market has become rampant, sparking a surge in red panda poaching.

RPN is fighting back!

We are countering these threats by ramping up awareness campaigns with the support from our conservation ambassador, Mr. Dayahang Rai. In addition, our anti-poaching networks are patrolling red panda habitat, and we're providing capacity-building training to enforcement agencies and other stakeholders.

The community-based and multi-faceted approach to this threat has been working. We educated security officials on wildlife crime through workshops emphasizing collaboration and joint patrolling between our anti-poaching networks and enforcement staff. In 2022, law enforcement officials confiscated 13 red panda pelts from traffickers (in 2021, 37 pelts were confiscated). There has also been a sharp decrease in the number of snares and traps due to the bi-annual patrolling by the anti-poaching units. With all this progress and positive updates, we must remember that wildlife crime still threatens the future of the endangered red panda.



In 2022, law enforcement officials confiscated

13

**red panda pelts
from traffickers**



42

Community
Forests patrolled
for poaching
activities

122

Anti-poaching
Members patrolled
304 km of forest
habitat

111

Security Officials
educated via 4
workshops on
illegal wildlife
trade

66

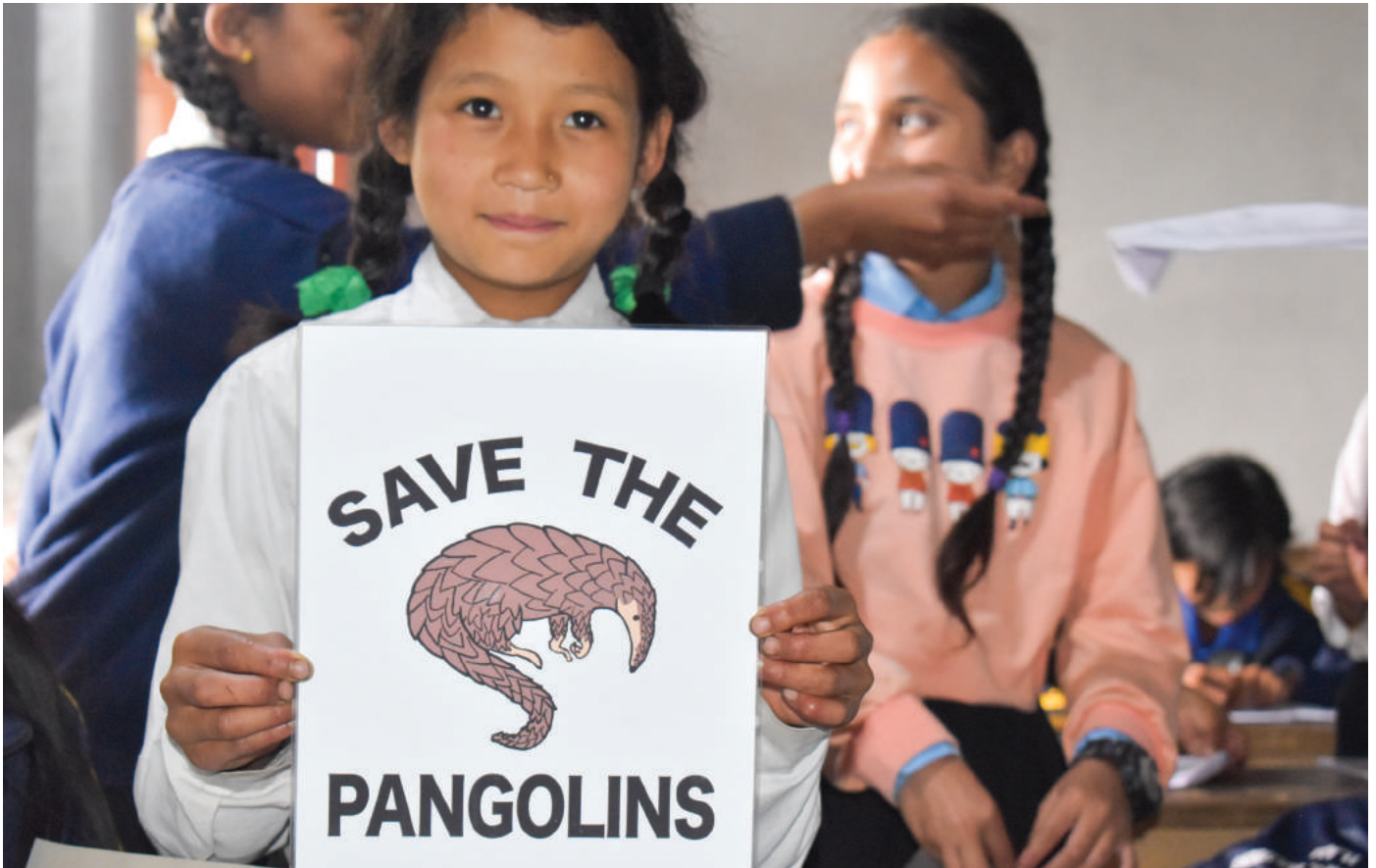
Local People educated via
2 workshops on
anti-poaching &
human-wildlife conflict.
Supported to establish a
Wildlife Crime Control
Bureau (WCCB) in Kalikot
district.



PROJECT PANGOLIN

Unfortunately, pangolins are the most illegally trafficked mammal in the world. The Panchthar-Ilam- Taplejung (PIT) region of eastern Nepal is home to red pandas and the Critically Endangered Chinese Pangolin – and RPN is committed to conserving them both.

Project Pangolin is a community-based pangolin conservation program which includes research, education (including youth outreach), and conservation initiative launched in 2021 based on our pangolin presence-absence survey results in the PIT region.



1ST

Initial presence-absence survey completed in Panchthar-Ilam-Taplejung region



PANGOLIN GUARDIANS

trained & hired as citizen scientists to monitor pangolin and their habitat



78

local people and students educated on pangolin and its ecological importance

EDUCATION & OUTREACH



>10,000

Students Participated in Red Panda Conservation Activities



>186,762

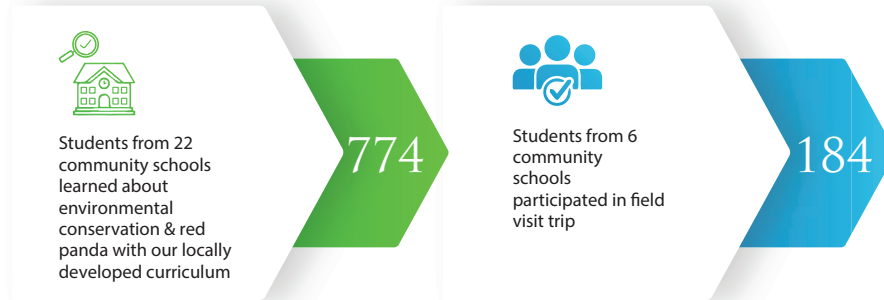
People Reached via Conservation Outreach Program





CONSERVATION EDUCATION

Children are the future, and we are dedicated to creating opportunities for them to learn about red panda conservation. We collaborated with local schools to incorporate conservation textbooks within school curriculums. Students learn about red pandas in the classroom and visit the local forests where red pandas live.



RED PANDA CONSERVATION SCHOLARSHIP: IGNITING A PASSION FOR CONSERVATION

In Nepal, poverty is a detriment to children in school. RPN's red panda conservation scholarships aim to support disadvantaged students who demonstrate academic ambition. The scholarships included financial support and necessary school supplies such as backpacks and other stationeries.



204

Students from 23 local schools received red panda conservation scholarships

RED PANDA BULLETIN

Red Panda Bulletins are essential for our youth outreach efforts in Nepal. We work with Red Panda eco clubs at local schools to release the wall bulletins: a student-led (under teacher supervision) quarterly release made up of stories, poems, songs, and artwork related to red pandas and other wildlife collected from fellow students. We then produce copies of the Annual Red Panda Bulletin (a compiled version of wall bulletins) and distribute them to students and stakeholders in the region.



>10,800

Students from 38 local schools participated in Red Panda Bulletin publication

>100,000

Students reached via Annual Red Panda Bulletin



CHILDREN, CELEBRATION AND CONSERVATION

This year is the 13th anniversary of International Red Panda Day (IRPD)! IRPD is dedicated to global celebration and education, and thousands of people worldwide celebrate IRPD every third Saturday in September. Local schools in Nepal's red panda range districts host IRPD activities such as essay writing, debates, art contests, and poem competitions – and many children become new Red Panda Rangers!



>2,600

Students, teachers & parents from 44 local schools celebrated International Red Panda Day 2022



REINFORCING COMMUNITY AWARENESS ON NATURE CONSERVATION

Education is power, and outreach tools such as local radio programs and information boards effectively raise awareness of red pandas and their need for conservation.



32,000

People informed about conservation via 16 conservation billboards in a year



50,000

People educated on conservation issues via 10 radio episodes



HABITAT MANAGEMENT



88,860

Native Tree Seedlings Planted



90

Hectares of Degraded Habitat Restored



2,117

Hectares of Forest Aligned with Red
Panda Conservation Measures





PLANT A RED PANDA HOME!

Plant a Red Panda Home (PARPH) addresses the challenges of habitat loss, degradation, and fragmentation in critical red panda habitats through active reforestation and assisted natural regeneration. Most of RPN's restoration work is centered in Jaubari, on the Nepal-India border in Ilam district, eastern Nepal. Restoring this area will result in 630 hectares of forest corridor that connects protected areas in Nepal with Singalila National Park in India.

How does it work? We plant trees, install fences to protect newly planted seedlings, construct waterholes, support forest

conservation nurseries, purchase nature (purchase of private lands for restoration and creating corridors), and enhance the local economy through green jobs.

We established the Jaubari Restoration Committee, which is responsible for conducting all restoration activities and post-planting operations. The committee comprises local people, primarily women, who will be long-term involved in the restoration efforts. The work within PARPH is a small contribution with bigger impact by RPN toward the larger UN Decade of Restoration 2021 - 2030 program.





PURCHASE FOR NATURE

RPN addresses the issue of habitat fragmentation by purchasing privately-owned land that has been degraded and restoring it into forest and functioning wildlife corridors. Two primary interventions support this initiative: reforestation through planting native species and the construction of fences to protect seedlings and facilitate natural regeneration.



7.4

Hectares of private land purchased for habitat restoration



1.9

Km area of forest fenced to minimize the impact of anthropogenic disturbance

COMMUNITY-BASED FOREST FIRE MANAGEMENT

Forest fires are a significant threat to wildlife in Nepal, especially during the dry months from October through May. While it is challenging to prevent forest fires, effective habitat management can reduce their recurrence, spread, and damage. The community-based forest fire management training educates local people on forest fire prevention, control measures, and appropriate handling of firefighting tools to combat wildfires.



24

Stakeholders trained on forest fire management



2

Sets of firefighting equipment provided to local stakeholders

ALIGNING RED PANDA CONSERVATION MEASURES

In Nepal, the Operational Plans for a Community Forest provide guidelines for Community Forest User Groups (CFUGs) on the utilization and management of forest resources. Plan revisions prioritize red panda conservation through critical habitat zonation and regulation on forest resource harvest. Endorsement of these revisions through local Division Forest Offices ensures the commitment to institutionalizing red panda conservation.



2,117

**Hectares in 13
Community Forests
managed with red
panda conservation
measures**



15

**Forest users
educated on
Operational Plan
preparation process
& management**



ELIMINATING ZOOONOTIC DISEASES: ANTI-RABIES VACCINATION CAMPAIGNS

Free-roaming dogs threaten the survival of red pandas - through predation and transmission of rabies and canine distemper. Even a few red panda deaths can significantly impact the local population. Therefore, local communities in the project area need help to provide annual immunizations for their domesticated dogs. RPN continues to work with District Livestock Service Centers to develop an effective vaccination program in Nepal and reduce the risk of zoonotic disease outbreaks.



2,889

**Free-roaming dogs
vaccinated for rabies &
canine distemper**

SUSTAINABLE LIVELIHOOD



56

Households Received Improved
Metal Cookstoves



>400

Households Benefited from
Sustainable Livelihood Programs





RED PANDA ECOTOURISM WITH AN IMPACT

A trip into the red panda’s Himalayan forest habitat is something special. Our small-group ecotrips allow you to experience conservation directly and witness its impact on people and red pandas. On an RPN ecotrip, all food, lodgings, and hospitality are provided by locals, creating sustainable employment and income.

The pandemic halted ecotrips in Nepal, but they are back, and ecotourism is now one of our most effective conservation programs. In 2022 we completed three trips with 25 ecotrippers from around the globe. On one ecotrip, participants saw three red pandas in four days!

Thank you to all who visited Nepal and experienced red pandas in the wild. We hope you share your life-changing experience with others and enjoy a stronger connection with the natural world and a more profound desire to protect it.



FINANCIAL FREEDOM FOR WOMEN IN RED PANDA RANGE

Gender inequalities limit the lives and opportunities of indigenous women in rural Nepal, with their roles limited to household chores and childcare. Capacity-building opportunities challenge existing norms and create financial freedom and a more inclusive world for rural women. RPN is committed to challenging gender injustices and providing critical livelihood opportunities for women in Nepal’s red panda range.



14

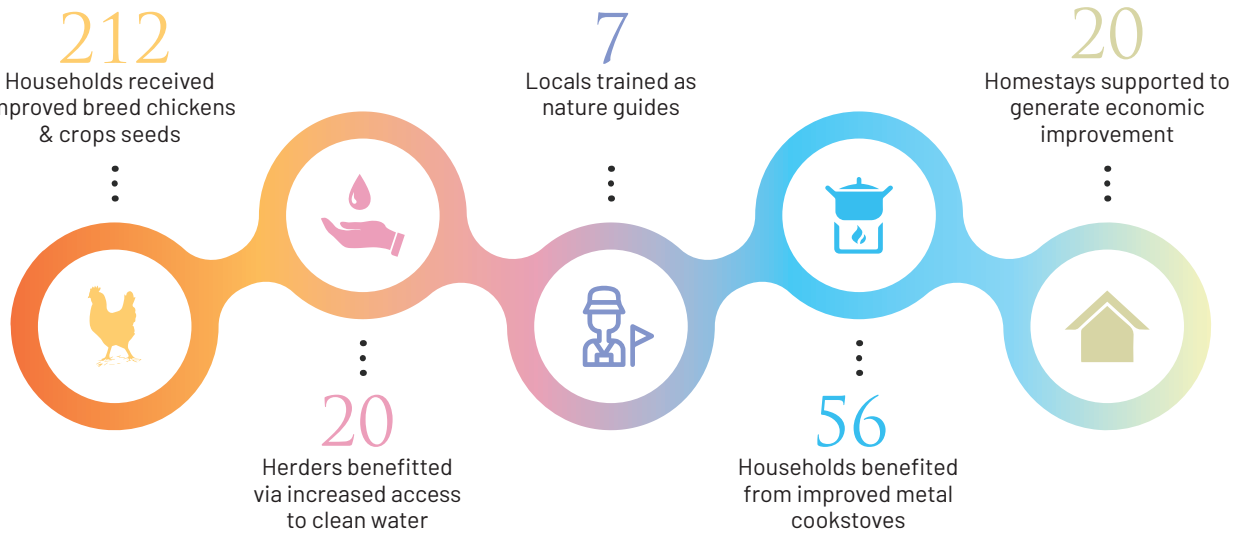
Local women trained in sewing & tailoring to improve their livelihood



1

Mother Group formed comprising 28 members from 4 CFs

LIVELIHOOD SUPPORT: CENTER TO CONSERVATION SUCCESS



Every year, RPN invests in livelihood improvement programs that provide new employment and income-generating opportunities for the people who live in red panda range communities. Some sustainable income stream initiatives include nature guide training, homestays for ecotourists, improved metal cookstoves, and greenhouse and water filter distribution.



GOVERNANCE



>600

Members from Local Councils
Consulted on Red Panda Conservation





WORKING BETTER TOGETHER

RPN has coordinated with the local, provincial, and federal level agencies to develop collaboration and build partnerships for successful project implementation. We organized consultation-sharing meetings and workshops with government officials, local council members, CFUGs, and other stakeholders.

Workshop participants discussed red panda conservation and site-specific threats, field achievements and challenges, and potential future collaboration and provides feedback on tentative work plans.



647

government members consulted during 38 meetings to coordinate ongoing red panda conservation efforts

DEVELOPMENT AND LAUNCH OF NEPAL RED PANDA GOVERNANCE STANDARD

From January 2020 to December 2022, we worked with Griffith University, University of Southern Queensland, and Kathmandu Forestry College to develop sustainable red panda conservation efforts through improved forest governance for ecosystem services, natural capital valuation, and stakeholder capacity building.

modification, which is one of this project’s significant milestones.

The “Nepal Red Panda Governance Standard” was developed based on a rigorous participatory approach that evolved through continuous consultation, collaboration, and

The Standard is voluntary and can be used informally for general evaluation or more rigorously to determine compliance. It elaborates context-specific methodologies for monitoring and evaluating the quality of forest management and governance and programs related to red panda conservation. The Secretary of the Ministry of Forests and Environment and RPN’s conservation ambassador jointly launched the Standard.





2022 SUPPORTERS

RPN acknowledges with gratitude the support received from each partner, donor and supporter in 2022.

We have made every effort to be as accurate as possible in this report to recognize our donors for their generous support. If an error comes to your attention, please let the U.S. development team know by emailing development@redpandanetwork.org

CONSERVATION PARTNERS

ORGANIZATION/GIVING LEVEL (In USD)

\$100,000 or ABOVE



\$50,000 to \$99,999



\$10,000 to \$49,999



\$5,000 to \$9,999



\$1,000 to \$4,999

- 🐾 Akron Zoological Park
- 🐾 Assiniboine Park Conservancy
- 🐾 Bioparc Doué la Fontaine
- 🐾 Cerza Conservation Caen
- 🐾 Chattanooga Zoo
- 🐾 Cincinnati Zoo & Botanical Garden
- 🐾 Cosmo Gatto
- 🐾 Cumbria Zoo Company Ltd
- 🐾 Dublin Zoo
- 🐾 Dudley Zoo
- 🐾 Folly Farm Leisure Ltd
- 🐾 Friends of the Rosamond Gifford Zoo
- 🐾 Fundacion Parques Reunidos
- 🐾 GaiaPark GV Utrecht
- 🐾 Gemeinschaft Der Förderer (Friends of Tierpark Berlin)
- 🐾 Grace Jones Richardson Trust
- 🐾 Greensboro Science Center
- 🐾 Henry Vilas Zoo
- 🐾 Hirakawa Zoological Park
- 🐾 ICIMOD: International Centre for Integrated Mountain Development
- 🐾 Itozu Zoo
- 🐾 Kolmården Wildlife Park
- 🐾 Korkeasaari Zoo
- 🐾 Leipzig Zoo
- 🐾 Magdeburg Zoo
- 🐾 Mazer Gaming LLC
- 🐾 Mesker Park Zoo and Botanic Garden
- 🐾 Nihondaira Zoo
- 🐾 North Carolina AAZK
- 🐾 Oklahoma City Zoo
- 🐾 Paradise Park
- 🐾 Parc Animalier de Sainte Croix (Sainte-Croix Biodiversité)
- 🐾 Parc De Branfere
- 🐾 Parc Zoologique des Sables d'Olonne
- 🐾 Potawatomi Zoo
- 🐾 Pueblo Zoological Society
- 🐾 Research Center for Applied Science and Technology
- 🐾 Saitama Children's Zoo
- 🐾 Sequoia Park Zoo
- 🐾 Wellington Zoo Trust
- 🐾 Woodland Park Zoo
- 🐾 Zoo d'asson
- 🐾 Zoo de Granby
- 🐾 Zoo de Guadeloupe
- 🐾 Zoo Dresden
- 🐾 Zoo Santo Inacio
- 🐾 Zoo Wuppertal
- 🐾 Zoological Society of Hertfordshire - Paradise Wildlife Park

UNDER \$1,000

- 🐾 AAZK - Assiniboine Park Conservancy
- 🐾 AAZK - Green Bay Chapter
- 🐾 AAZK - Point Defiance
- 🐾 AAZK - Potter Park Zoo
- 🐾 AAZK - Rosamond Gifford Zoo
- 🐾 AiYuDesigns
- 🐾 Association of British and Irish Wild Animal Keepers
- 🐾 Beserk
- 🐾 Buddy Payroll & HR
- 🐾 Charities Aid Foundation America
- 🐾 CMDiscord
- 🐾 Cupcakes4Change
- 🐾 Drayton Manor Theme Park
- 🐾 Erie Zoological Society
- 🐾 Hillside Academy for Excellence and Friends
- 🐾 Homer Anesthesia LLC
- 🐾 Jihlava Zoo
- 🐾 Manor House Wildlife Park
- 🐾 Merjent
- 🐾 Milwaukee County Zoo
- 🐾 Nogeyama Zoological Gardens
- 🐾 Omuta City Zoo
- 🐾 Panda's Cookie Jar
- 🐾 Project Opus
- 🐾 Red Panda Books
- 🐾 Red Panda Tai Chi Institute
- 🐾 Red River
- 🐾 RedPanda Systems
- 🐾 RedPandas Digital Marketing
- 🐾 Rossifari X Peace, Love & Tie-Dye
- 🐾 Salesforce.org
- 🐾 Sasebo Pearl Sea Co., Ltd.
- 🐾 Science Club
- 🐾 SecretLab.com
- 🐾 Trail Lodge Tea
- 🐾 Utica Zoo
- 🐾 Vellabox and Scentbird
- 🐾 Virginia Zoological Society
- 🐾 Water Zoo AG Gossau
- 🐾 Waypoint Montessori
- 🐾 Zoo du Bassin d'Arcachon
- 🐾 Zoo Montana

THE RED PANDA EEP FOREST GUARDIAN PROGRAMME

- 🐾 Zoo Görlitz
- 🐾 Gaia Zoo
- 🐾 Zoo Ljubljana
- 🐾 Parc animalier de Sainte-Croix
- 🐾 Zoo Karlsruhe
- 🐾 Zoo de la Boissière du Doré
- 🐾 Monde Sauvage Safari Park
- 🐾 Tierpark Berlin
- 🐾 West Midland Safari Park
- 🐾 Zoo Wrocław
- 🐾 Reserve Zoologique de Calviac
- 🐾 Ouwehands Dierenpark
- 🐾 Antwerp Zoo
- 🐾 Biotropica Zoo
- 🐾 Mulhouse Zoo
- 🐾 Avifauna
- 🐾 Givskud Zoo
- 🐾 Zoo de Champrepus
- 🐾 Zoo Salzburg
- 🐾 Tierpark Hellabrunn
- 🐾 Boras Djurpark
- 🐾 Shepreth Wildlife Park
- 🐾 Zoo Dortmund
- 🐾 Colchester Zoo
- 🐾 Chester Zoo
- 🐾 Woburn Safari Park
- 🐾 Kölner Zoo
- 🐾 Paris Zoo
- 🐾 Parco Faunistico Le Cornelle
- 🐾 Zoo Merveilleux
- 🐾 Zoo Opole
- 🐾 Parc Zoologique Brasov
- 🐾 Parken Zoo Eskilstuna
- 🐾 African Safari Plaisance-du-Touch
- 🐾 Zoo Nürnberg
- 🐾 Aachen Zoo

IN COUNTRY CONSERVATION PARTNERS

- 👉 Samuhik Abhiyan - Bhojpur
- 👉 Destitute Castes Revoking Forum - Dolpa
- 👉 Mountain Organization Nepal - Ilam
- 👉 Danfe Yuwa Club - Jajarkot
- 👉 Karnali Development Cooperation Service Society - Jumla
- 👉 Himalayan Community Resource Development Center - Kalikot
- 👉 Jana Kalyan Samaj Nepal - Khotang
- 👉 Deep Jyoti Youth Club - Panchthar
- 👉 Himali Conservation Forum - Taplejung
- 👉 Human Rights Awareness Center - Rolpa
- 👉 Human Rights Environment and Development Campaign and
- 👉 Research Centre - Rukum
- 👉 Himalayan Health and Environmental Services Solukhumbu - Solukhumbu

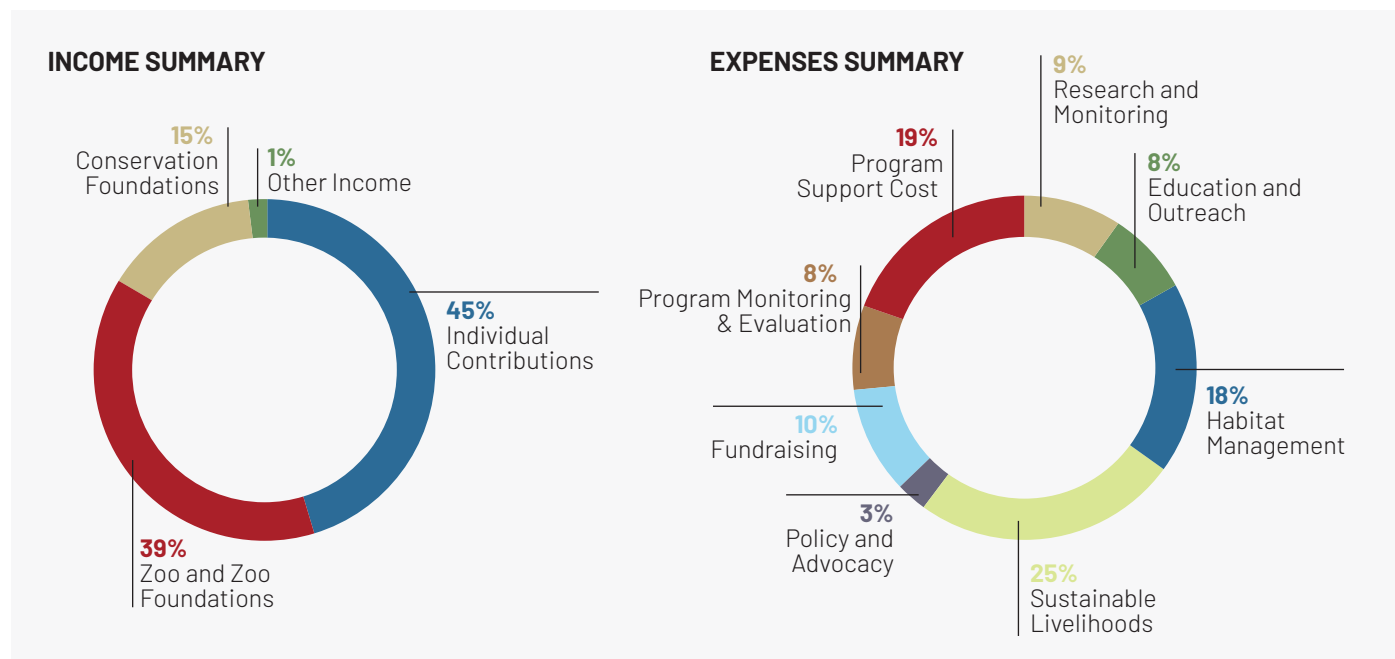
ACKNOWLEDGMENTS

Ministry of Forests and Environment; Ministry of Women, Children and Senior Citizen; Ministry of Industry, Tourism, Forests and Environment (Province No. 1, Lumbini Province, & Karnali Province); Department of Forests and Soil Conservation; Department of National Parks and Wildlife Conservation; Social Welfare Council; Nepal Police, Central Bureau of Investigation; Division Forest Offices - Bhojpur, Dolpa, Ilam, Jajarkot, Jumla, Kalikot, Khotang, Panchthar, Rolpa, Rukum (east), Rukum (west), Solukhumbu & Taplejung; Education Development and Coordination Unit - Ilam, Panchthar, & Taplejung; Rural/Urban Municipalities; Stock Photography Nepal, Kathmandu Forestry College, University of Southern Queensland, Griffith University, University of Queensland, Oregon State University.

RPN would like to extend our sincere gratitude and appreciation to our individual supporters and monthly donors ("Panda Guardians") for your continued support and generosity

FINANCIAL STATEMENT

As of 31 December 2022



INCOME SUMMARY

Program Areas	Amount (USD)	% of Total
Individual Contributions	573,659	45
Zoo and Zoo Foundations	484,836	39
Conservation Foundations	189,794	15
Other Income	16,732	1
Total Income	1,265,021	100

EXPENSES SUMMARY

Program Areas	Amount (USD)	% of Total
Research and Monitoring	92,666	9
Education and Outreach	82,370	8
Habitat Management	185,332	18
Sustainable Livelihoods	257,406	25
Policy and Advocacy	30,889	3
Fundraising	102,962	10
Program Monitoring and Evaluation	82,370	8
Total Program Services	833,994	81
Support Areas	Amount (USD)	% of Total
Program Support Cost	195,628	19
Total Expenses 2022	1,029,622	100

15 HIGHLIGHTS OF THE 15TH ANNIVERSARY OF RED PANDA NETWORK



In 2007,

Red Panda Network (RPN) becomes the world's first non-profit organization dedicated to protecting red pandas. We work with local communities in Nepal to serve as active partners in the conservation of wild red pandas and their habitat.



In 2010,

launched our integrated community-based red panda conservation program in eight villages of eastern Nepal's Taplejung district.



In 2016,

collaborated with the Government of Nepal to complete the nation's first national red panda status and habitat survey. The presence of red pandas was discovered for the first time in Lamjung, Bhojpur, and Dolpa districts!



In 2016,

began establishing the Panchthar-Ilam-Taplejung- (PIT) Red Panda Protected Forest: the world's first protected area dedicated to red pandas.



In 2007,

created Project Punde Kundo, the world's first community-based red panda monitoring program.



In 2016,

worked with the Government of Nepal's Ministry of Forests and Environment to develop the world's first protocol for community-based red panda field survey and monitoring.



In 2018,

western Nepal saw its first red panda conservation programs when we expanded our community-based model to the region's unprotected areas.



In 2018,

launched the largest and most comprehensive effort to stop the illegal red panda trade. First anti-poaching network for red pandas in Nepal!

RPN purchased land for habitat restoration in Jaubari, Ilam where our restoration is ongoing. The right part of the ridge, the forest area is Singalila National Park in India and a prime habitat of red pandas and other endangered wildlife.

PHOTO: RPN/SRIJANA BHATTA



RED PANDA NETWORK
Celebrating 15 Years
 2007 — 2022



RED PANDA
 NETWORK

In 2018,



provided key support for Nepal's first five-year (2019-2023) red panda conservation action plan.

In 2019,



provided technical support to the Government of Bhutan in developing their first red panda conservation action plan.

In 2019,



launched Plant A Red Panda Home (PARPH) – the first campaign to reforest core habitats, connect fragmented forests and create a wildlife corridor and sustain a viable red panda population in Nepal.

In 2020,



purchased 22 acres of private land for PARPH in Jaubari, eastern Nepal. This is the first-time land has been purchased for the restoration of red panda habitat in Nepal. We purchased 99 acres by the end of 2022!

In 2019,



in collaboration with Rotterdam Zoo, our intensive camera trap mammal survey in eastern Nepal provided the country's first photographic evidence of the endangered marbled cat.

In 2019,

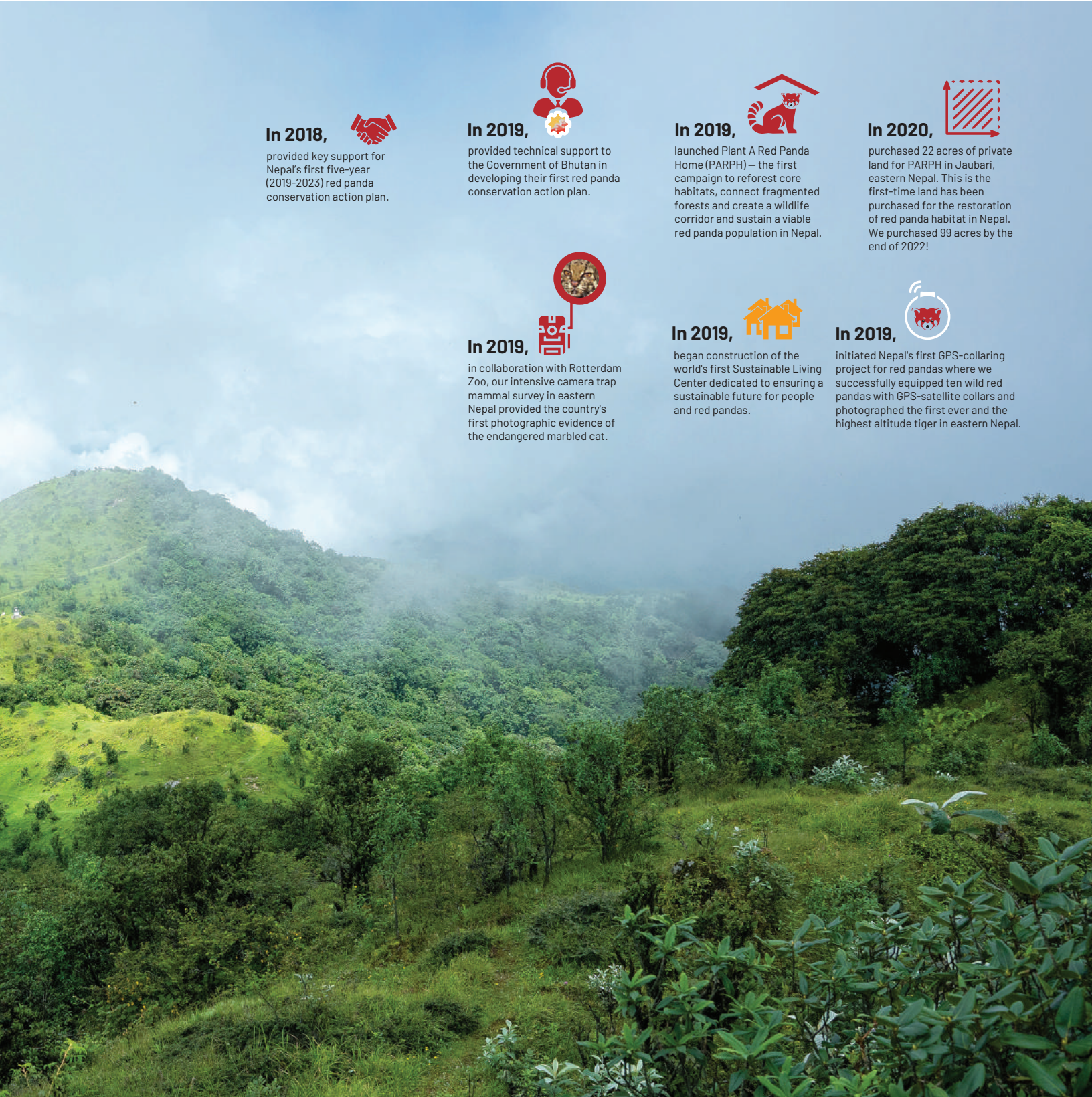


began construction of the world's first Sustainable Living Center dedicated to ensuring a sustainable future for people and red pandas.

In 2019,



initiated Nepal's first GPS-collaring project for red pandas where we successfully equipped ten wild red pandas with GPS-satellite collars and photographed the first ever and the highest altitude tiger in eastern Nepal.





CAPTIONS & CREDITS

With gratitude to the contributors of this report, including: Sonam Tashi Lama, Janam Shrestha, Sony Lama, Pema Sherpa, Terrance Fleming, Mark Hougardy, Haris Chandra Rai, Ang Phuri Sherpa, Wangchu Butia, Dinesh Ghale, Munmun Tamang.

Front Cover: Restoration Guardian © RPN/Saroj Magar - **Inside Front Cover:** The glorious Kangchenjunga range from Panchthar district © RPN/Rashik Maharjan - **Page 4:** Executive Director of Red Panda Network © RPN/Stock Photography Nepal - **Page 5:** Red panda habitat: tree branches covered in mosses, bundles of bamboo and misty forest © RPN/Axel Geuber - **Page 6:** Map of RPN working districts © Sony Lama/RPN - **Page 7:** Whitley Award winner Sonam Lama receiving his prize from WFN Patron Her Royal Highness The Princess Royal (top) © Whitley Fund for Nature/ RPN ; Winners of Whitley Award 2022 (bottom) © Whitley Fund for Nature/ RPN - **Page 8 & 9:** Arboreal camera trap set for monitoring red pandas being installed by Forest Guardian Man Kumari Nembang © RPN/Rashik Maharjan - **Page 10:** Camera trap installation for assessing mammalian diversity in red panda habitat © RPN/Gyajo Lama Bhote - **Page 11:** Forest Guardians learning to use GPS © RPN/KDCSS - **Page 12:** Red panda & its habitat monitoring data sheet being filled by Forest Guardian. GPS is an important piece of equipment for them (top) © Pema Sherpa/RPN ; Fresh red panda pellets from encountered in field during monitoring (bottom) © RPN/Rashik Maharjan - **Page 13:** Awareness building workshop on red panda conservation, wildlife poaching and illegal trade for Armed Police Forces in border areas with India of Panchthar and Ilam district (top right) © RPN/Naresh Shrestha ; Anti-poaching patrolling © RPN/Jiwan Rai, NP2: Camera trap installation to monitor human disturbance in suspected areas of community forests (bottom) © RPN - **Page 14:** Camera trap installation to monitor human disturbance in suspected areas of community forests (top left) © RPN ; Red Panda carcass found during the anti-poaching patrolling by the Forest Guardians in Panchthar district (top right) © RPN/Rashik Maharjan ; Awareness building workshop on red panda conservation, wildlife poaching and illegal trade for security personnel in Taplejung district (bottom) © RPN/HCF - **Page 15:** Awareness campaign for pangolin conservation for school children in Sulubung village of Ilam district © RPN/Naresh Shrestha - **Page 16 & 17:** Children learning about the mechanisms of camera trap during pangolin conservation workshop © RPN/Naresh Shrestha - **Page 18:** Environmental Conservation Textbooks endorsed by RPN being studied by the children from PIT district (top right) © RPN/MOON ; Recipients of red panda conservation scholarships along with their school supplies (bottom) © RPN/Naresh Shrestha - **Page 19:** Creative outcome of students from different schools in PIT districts. These artwork are hung in the wall bulletin of their respective schools © RPN/DJYC, MOON, HCF - **Page 20:** Children celebrating International Red Panda Day © RPN/DJYC - **Page 21:** Igniting community conversation on red panda and biodiversity conservation © RPN - **Page 22 & 23:** Juniperus indica being planted by Restoration Guardian © RPN/Srijana Bhatta - **Page 24:** Restoration Guardians in action in a sunny morning in Jaubari © RPN/Srijana Bhatta - **Page 25:** Weeding & Trimming for the planted saplings as an important post-plantation management measures (top left) © RPN/Naresh Shrestha ; Restoration Guardian (top right) © RPN/Srijana Bhatta ; Pasang Cheki Sherpa, Nursery Caretaker of Jaubari Forest Conservation Nursery (middle left) © RPN/Naresh Shrestha ; Water Conservation Pond in construction phase in our restoration site (middle right) © RPN/Naresh Shrestha ; A happy bunch of Restoration Guardians during tree planting season (bottom) © RPN/Saroj Magar - **Page 26:** Land purchased for restoration by RPN in eastern Nepal to create a functional biological corridor between Nepal's community forests and India's National Park © RPN/Srijana Bhatta ; **Page 27:** Restoration site and its forest conservation nursery in eastern Nepal © RPN/Srijana Bhatta - **Page 28 & 29:** Improved Metal Cookstove by RPN being used in a household in Ilam district © RPN/Saroj Magar - **Page 30:** Red panda sighted in October eco-trip (top left) © RPN/Aron Smolley ; Eco-trippers walking with a hope to sight red pandas in the wild. And they did! (bottom left) © RPN/Gyajo Lama Bhote ; Healthy agricultural yield from polyhouses distributed by RPN for the families in western Nepal (top right) © RPN/HURED-CARC ; Homestay supported by RPN in Patarasi Jumla (bottom right) © RPN/KDCSS - **Page 31:** Participants in the nature guide training trying to identify birds in their surroundings (top) © RPN ; Improved Metal Cook Stoves were provided for the communities in eastern Nepal (bottom) © RPN/Naresh Shrestha - **Page 32 & 33:** Aerial view of temperate broadleaf forest habitat of red panda © RPN/Rashik Maharjan - **Page 34:** Community consultation for red panda conservation being held in Taplejung district of eastern Nepal (top) © RPN/HCF ; Participants at the "Nepal Red Panda Government Standard" Launch (bottom left) © RPN/Hari Bhakta Dangol ; The Secretary of the Ministry of Forests and Environment and RPN's Conservation Ambassador jointly launched the "Nepal Red Panda Government Standard" (bottom right) © RPN/Hari Bhakta Dangol - **Page 35:** Himalayan Habre Center, Taplejung © RPN/Stock Photography - **Page 42:** Oak tree: One of the preferable resting tree species of red panda © RPN/Hari Bhakta Dangol - **Inside of Back Cover:** Regenerated bamboo in RPN restoration area in Jaubari © RPN/Srijana Bhatta - **Back Cover:** Fluffy red panda in eastern Nepal © RPN/Rashik Maharjan





RED PANDA
NETWORK

US OFFICE

Red Panda Network
494 W 10th Ave Suite #7
Eugene, OR 97401 (877) 854-2391
info@redpandanetwork.org
www.redpandanetwork.org

NEPAL OFFICE

Red Panda Network
539, Dashrath Chand Marga
PO Box 6507
Baluwatar, Kathmandu, 44600
Phone: +977 1 4415745
info.nepal@redpandanetwork.org

