

# ALL ABOUT RED PANDAS

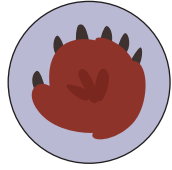
*Ailurus fulgens*, or **the Firefox**

## What do Red Pandas look like?



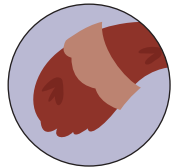
### CAMOUFLAGE FUR

The red fur matches the moss found on the trees where they live. The black on their stomach makes it difficult for predators to spot them looking up into the trees.



### FURRY FEET

The soles of Panda's feet are covered in fur to help keep them warm and grip onto slippery, mossy branches.



### FLUFFY TAIL

The Firefox's tail helps them keep balance while climbing through trees. When it gets really cold, it is used as a blanket to keep them warm.



**Head & Body** 20-26" long

**Tail** 15-20" long

## Where do they live?



■ Red Panda habitat

Red Pandas live in mountain forests of Nepal, India, Bhutan, China and Myanmar (Burma). All Red Panda homes are in Asia's **HIGH ALTITUDE TEMPERATE FORESTS** that have **PLENTY OF BAMBOO**.

## What About Their Behavior?

Red Pandas spend most of their time in trees (**ARBOREAL**) & spend

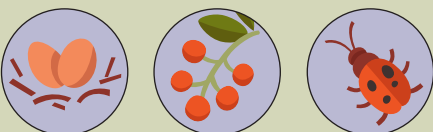
**55% OF THEIR DAYS SLEEPING**

- Red Pandas are most active in the early morning and late afternoon (**CREPUSCULAR**)
- They are normally solitary creatures but come together in pairs in the breeding season.
- Red Pandas often communicate using body language (**HEAD BOBBING AND TAIL ARCHING**) and a variety of noises including the "**HUFF-QUACK**" and a "warning whistle."



## What do Red Pandas Eat?

**95% OF THE DIET IS BAMBOO**



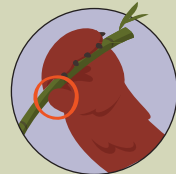
The other 5%

includes eggs, berries, and insects



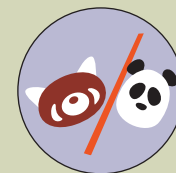
Red Pandas eat up to 20,000 leaves each day!

## Why are Red Pandas Unique?



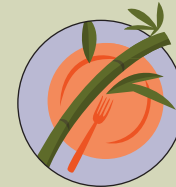
### FALSE THUMB

Like Giant Pandas, Red Pandas have an extra "thumb," which is an enlarged bone for grabbing bamboo stems and tree branches.



### FAMILY OF THEIR OWN

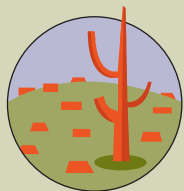
Red Pandas were discovered 50 years before the Giant Panda. They are the only member of their taxonomic family.



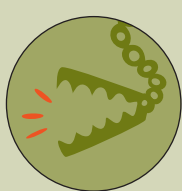
### MOSTLY-VEGETARIAN CARNIVORE

Although classified as a carnivore, Red Pandas rarely eat meat.

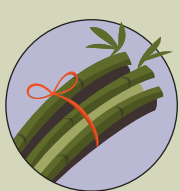
## What is Threatening the Population?



**HABITAT LOSS & FRAGMENTATION**



**ILLEGAL TRADE**



**EXPLOITATION OF FOREST RESOURCES**

These reasons, along with **DISEASE AND CLIMATE CHANGE** have all contributed to the rapid decline in the Red Panda population.

## What's The Red Panda Species Status?

**ENDANGERED**

AS FEW AS **2,500**

Red Pandas left in the wild

↓ **50% DECLINE**

in the population in the last 20 years

## How Can You Help? TAKE ACTION!

### ADOPT A PANDA

The symbolic adoption goes directly towards supporting the Pandas and makes a great gift!

### JOIN AN ECOTRIP

Experience Red Pandas in their native habitat and support the rural communities committed to protecting the forests.

### VISIT [RedPandaNetwork.org](http://RedPandaNetwork.org)

Learn more about Red Pandas and how you can help.

### BECOME AN ADVOCATE

Teach others about the unique traits of Red Pandas, and how they are an important reflection of the diverse ecosystem.

### DONATE TO THE RPN

Your donation can help support the conservation efforts of the Red Panda Network.

### SPONSOR A FOREST GUARDIAN

Support local people who monitor and protect the red panda habitat, as well as educate their local communities.



**RED PANDA NETWORK**